



skytrust[®]


Intelligence System





skytrust
Intelligence System[®]



 **skytrust** is a diverse cloud-based organisational management system which drives performance and provides dashboard based situational awareness.

- ✓ Planning and Task Management
- ✓ Project Management
- ✓ Safety Management
- ✓ Quality Management
- ✓ Environmental Management
- ✓ Human Resource Management
- ✓ Asset Management
- ✓ Training Management



Secure

Skytrust remains totally secure and private to your organisation



Calendar based

Skytrust automatically updates transactions, issues, escalations and reminders



Immediate Access

Instantaneous on-line auditing, incident and hazard reporting will save you time and money



Indicative reporting

Skytrust enables automated reporting of critical functions and statistics to empower you to make decisions



Drillable dashboards

The skychart feature provides incredible oversight over your business or organisation



Performance management

Allows for all actions to be raised and monitored no matter how large your organisation may be



Turnkey solution

Skytrust can be configured and operational within 48 hours



The global standard

Skytrust is aligned to major global standards including ISO 9001; ISO 14001; OHSAS 18001 and AS 4801



Up to date

Skytrust is constantly updated with new technologies, modules and features



Records management

The ability to upload and maintain documentary evidence boosts your compliance level to statutory standards

SKYTRUST

WHAT IS SKYTRUST?

Skytrust is a cloud based integrated management system providing a holistic integrated management approach to your organisation's compliance and due diligence across all aspects of business. The user-friendly tools assist with risk management, safety, quality, environment, inductions, assets and plant management. Skytrust delivers a real time dashboard providing trending performance indicators promoting important business decisions to increase efficiency and productivity.

Designed to directly align to ISO9001, ISO14001, OSHAS18001, ISO31000 and AS4801, this approach has proven successful in any industry sector.

Skytrust has no large upfront costs with a monthly subscription and no lock in contracts.

OUR TEAM

The Skytrust Executive has extensive real-life experience in the managing of projects, organisations and people across a diverse portfolio of industries including manufacturing, civil, engineering, building, consultancy and other sectors.

Our programming team is specifically selected combining specialty technical abilities with good human relation skills. Our workforce is multi-skilled, multi-national and passionate about the Skytrust vision.

In conjunction with Skytrust Alliance Partners and Certified Partners, our corporate structure reflects a dynamic, passionate, and professional human resource which continues to push the technological capabilities and works in close unison with Skytrust subscribers to create a platform with formidable functionalities at a realistic price-point.



David Miller (Manager of Global Sales), Mary Nizamis (Business Relationship Manager) and Corey Burford (Managing Director) at a recent Safety Trade Show.

ABOUT US

Skytrust (QHSE Integrated Solutions Pty Ltd), is a global software house headquartered in Adelaide Australia. Operating since 2005, our platforms have over 100,000 users, with significant market share in Australasia and a growing market in the Middle East, Asia and Europe. With an ever increasing diversity of customers, Skytrust is utilised by all industry sectors including local government, mining, civil and construction, manufacturing, agricultural and defence organisations. We work with our customers to continue to evolve and innovate Skytrust functionality. Our team of staff includes dynamic as well as highly specialised programmers, customer service and qualified risk and HR professionals. Our alliance partners add value in design, operational in-field testing and consultation. Skytrust is represented by a network of Certified Partners which act as software distributors and specialist consultants in chosen areas of expertise.

SKYTRUST Functions

SKYCHART DASHBOARD

The Skychart Dashboard is a visual, live dashboard of critical business risks and information. Skychart automatically updates as other parts of the system are updated. It is fully drillable; click on a graph and the system will drill into greater detail. Various dashboard options are available to ensure your dashboard is customised for complete efficiency. Performance manage your organisation through visual indicators and thresholds. Base your business decisions on real-time, accurate information.



Skychart Dashboard

INCIDENT REPORTING

Report any incident with quick self-populating screens using an automated email notification process.

Injury Management

Record, monitor and investigate injuries. Choose the level of complexity required to meet your reporting needs for body location, nature of injury, mechanism of injury and agency of injury.

Environmental Impact

Record and manage aspects and impacts of incidents which affect the environment. Raise an environmental hazard if required. Record and manage property damage including insurance claim details.

Community Impact

Detail the outcome of an incident as it affects relations with the community.

Hazard Report

Identify and manage hazards resulting from, or caused by, an incident.

Incident Documents

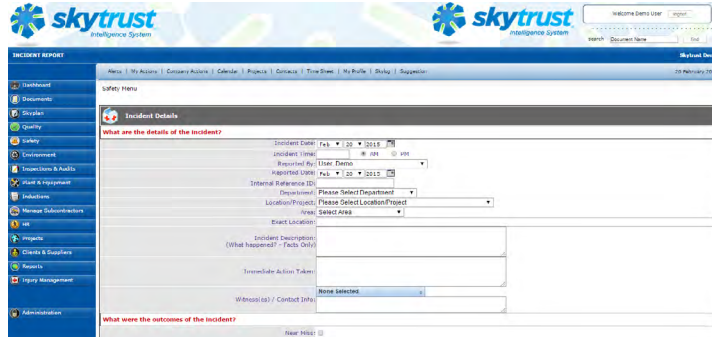
Upload documents to provide evidence of the incident, including witness statements, photos or videos of the injury,



SKYTRUST Functions

Email Notifications

Automated emails to notify supervisors, managers, directors, OH&S officers, environmental managers, etc. of incidents or injuries as soon as they are reported. Email notifications can be set as required.



Incident Reporting via the Safety Menu

Investigations

Identify and record incident causal factors. Record post-incident interviews, suggested actions, and undergo the complete corrective action process to avoid similar incidents in the future.

HAZARD REGISTER

Action identified hazards in priority order in accordance with ISO 31000 for risk management. Set the date and/or review on any identified hazard with email notifications, action lists and calendar entries. Report and graph hazard management performance dynamically at the press of a button. List any specific controls for identified or residual hazards. Attach documents to the specific control including procedures or photos. Graph performance based on comparison of control types used. Easily record and assess risks by the person identifying the risk and forward to the relevant manager of your choice; completed in only 4 easy clicks. Full filter options are available (by location, by area, by keyword or person).

Adding a new Hazard to the Hazard Register

Likelihood	Consequence					
	Negligible Injury - First aid treatment	Minor Injury - Injury requiring medical treatment	Moderate Injury - Injury requiring extensive medical treatment	Major Injury - Injury resulting in permanent incapacitation	Catastrophic Injury - Injuries resulting in single or multiple deaths	
	Negligible or no quality damage/impact	Minor quality damage/impact	Significant quality damage/impact	Major quality damage/impact	Extensive quality damage & loss	WHS
	Negligible or no environmental damage/impact	Minor environmental damage/impact	Significant environment damage/impac	Major environmental damage/impact	Extensive environmental damage & biodiversity degradation	Quality
	Negligible financial loss <= \$5k	Notable financial loss \$5k - \$50k	Substantial financial loss \$50k - \$500k	Significant financial loss \$1m+	Extensive financial loss \$5m+	Environment
						Business
Almost Certain	11 Medium	16 High	20 High	23 Extreme	25 Extreme	
Likely	7 Medium	12 Medium	17 High	21 High	24 Extreme	
Possible	4 Low	6 Medium	13 Medium	18 High	22 High	
Unlikely	3 Low	5 Low	9 Medium	14 Medium	19 High	
Very Unlikely	1 Low	2 Low	6 Low	10 Medium	15 High	

Skytrust's fully customisable Risk Matrix

SKYTRUST Functions

ENVIRONMENTAL TRACKING & IMPROVEMENT

Our Environmental Management module operates using processes which comply with ISO 14001. When environmental issues are identified, Skytrust allows you to conduct an environmental audit, inspection, or identify risks through incident reporting. Raise and track suggestions for conservation or sustainability improvements, perform an Environmental Risk Assessment identifying the aspect and associated impact on the environment and re-assess the risk after remedial action and compare risk scores.

Live Search Add to Risk Register

Plant Risk Assessment	Process	Location/Project	Keyword	Risk Score	Sort By Risk Score
All Risk Assessments ▾	Environment ▾	Please Select		Initial ▾	Descending ▾

Export to Excel Document

ID	Risk Title/Description	Location/Project	Risk Score	
Risk - 26	Transporting Oil Spill into stormwater system	Corporate Rail Safety Risk Register	21 (High) - 84.00%	Modify
Risk - 45	Trade waste overflow Flows into water system	Happy Valley WTP	17 (High) - 68.00%	Modify
Risk - 62	Blocked Drain.....Emergency Repair Environmental expose to retrieved waste	Altona Gate	13 (Medium) - 52.00%	Modify
Risk - 67	Sweating while using electric drills During the wet season 'build up' employee are exposed to extremely hot and humid conditions. When on a roof using an electric/battery drill there is an increased risk of sweat entering the drill.	P0033 Brentleigh Park QUE	4 (Low) - 16.00%	Modify
Risk - 926	Asbestos Asbestos may be found in many different building materials	Strategic Planning	14 (Medium) - 56.00%	Modify

A view of Skytrust's Risk Register

Plan and track all the required actions with completion dates and review dates, including automatic notifications to responsible managers. Manage and monitor all residual risks. The information given from the Risk Assessment can be fully integrated into (optional) Skytrust Premium Dashboard.

QUALITY SYSTEM

Skytrust's Quality System operates in an environment where ISO 9001 forms the basis of a continual improvement process. You can track OFI's, complaints, product defects, account and delivery issues, and other opportunities for improvement. Ensure every report is actioned by:

- Completion and Review Dates - Assign actions to specific people with completion or review dates for each task
- Escalation - Email notifications to a higher level of responsibility should completion dates not be achieved

OFI Details		BM : 27	Print OFI	
Date:	11/11/2014	Status:	Complete	
Type:	Building Maintenance	Due Date:	11/12/2014	
Department:	Networks			
Project/Location:	St.Kilda Road Fit Out			
Originator:	David Miller			
Details:	repaint gutters on shed			
Estimated Cost:	\$0.00			
Manager(s):	David Miller			
Manager Informed Date:	11/11/2014	Manager Updated:	11/11/2014	
Manager Details:	Painters organised for 12/11			
Manager Estimated Cost:	\$450.00			

Building maintenance Opportunity for Improvement details screen

SKYTRUST Functions

ISO 9001 Non-Compliance Management

- Formal ISO 9001 process orientated non-conformance reporting module which allows analysis of the non-conformance, uploads of photos and documents, remedy management and tracking of effectiveness of changes implemented
- Track by Business Unit, Department, Project and Location
- Escalate outstanding non-conformances
- Prioritise non-conformances
- Create your own non-conformance classifications
- Add multiple cause analysis and actions to a single non-conformance

NCR Details

NCR ID: 144
 Date: 11/11/2014
 Type: Defect
 Type Criteria: Vehicle
 Detection Method: Client
 Client:
 Subcontractor:
 Supplier:
 Equipment: 1.0 - 3.5 Tonne 8-Series 4-Wheel Forklift - (#1236454)
 Category: Major
 Priority: High
 Department: Skytrust Safety Department
 Location/Project: St.Kilda Road Fir Out
 Area: Wastewater Treatment
 Originator: David Miller
 Description: Faulty tail lights
 Status: Closed

Order Number	Created Date	Originator	Issue	Cause	Evaluating Need	Reason	Action	Action Type	Responsible Person	Due Date	Priority	Solution	Estimated Cost	Final Cost	Result	Effectiveness	Date Closed	Status	Add NCR Actions
	11/11/2014	David Miller	faulty tail lights causing dangerous situation at night	blown fuse	Proceed	need fuse replaced	replace fuse	Repair	David Miller	12/11/2014	High	replaced fuse	5	4.5	Passed safety inspection	1. Remedy Effective	11/11/2014	Closed	Modify

A view of a Non-Conformance Report (NCR)

Within Skytrust’s Quality System create specific inspections, observations and audits and schedule them to be performed regularly if required. Include reference to standards, codes of practice, or legislation and calculate compliance levels instantly. Generate actions from non-compliant inspection items.

INSPECTION & AUDITS

Your Upcoming Inspections & Audits

ID	Scheduled Date	Frequency	Description	Workplace
Inspection - 40	19/09/2012	Monthly	Safety Inspection	Skytrust Demo
Inspection - 33	21/09/2012	On Demand	Monthly vehicle check	Skytrust Demo
Inspection - 39	21/09/2012	On Demand	Safety Inspection	Skytrust Demo
Inspection - 42	29/08/2012	On Demand	Testing taps	Skytrust Demo
Inspection - 50	29/08/2012	Two Yearly	Plant Maintenance check	Skytrust Demo
Inspection - 8	29/08/2012	On Demand	Site safety audit	Skytrust Demo

COMMITTEE/MEETINGS

Your Upcoming Committee Meetings

ID	Scheduled Date	Convenor Name	Description	Workplace
Meeting - 1	19/09/2012	David Miller	Plant Safety Committee	Skytrust Demo

A user’s upcoming inspections and audits

SKYTRUST Functions

EQUIPMENT/PLANT REGISTER/INVENTORY

Print QR Codes

Export to Excel Document

Add Plant & Equipment

Excel

Search:

Business Unit	Description	Type	Make	Model	Tool No.	Serial No.	Custodian	Location/Project	Status	Comment	Minor?	
Skytrust Demo	1 Platforms, 1 Kickboard, 1 Brace, 1 Ladder	Scaffold Aluminium Mobile	Mr Scaffold	Mobile Scaff	001	123456	Anne Bailey		In Use		No	edit
Skytrust Demo	1.0 - 3.5 Tonne 8-Series 4-Wheel Forklift	Fork Lift	Toyota	8FG/8FD	1236454	987654423	David Miller	St.Kilda Road Fit Out	In Use		No	edit
Skytrust Demo	1000LT WATER TANK	Trenching Equipment	MasterTrench	WT1000	3	K34247249	Anthony Cale				No	edit
Skytrust Demo	100mm RIDGID CUTTERS	Plastic Cutters	RYPCOT	PRC100	645	88551368APR	Fred SkyTrust		In Use	In use with AAR Project - SCR073. 1 month lend, 2/2/15 must be returned.	No	edit
Skytrust Demo	12v CAR BATTERY	General	Supercharged	N60LS	903	DES22255479					No	edit
Skytrust Demo	13.5 TONNE SHACKLE	Lifting Equipment	Iron Shack	135TS		994578820001D	David Miller				No	edit
Skytrust Demo	1300LT WATER TANK	Trenching Equipment	MasterTrench	WT1300	1164	K35489215	Anthony Cale	Operation Improve Surtech	In For Repair	Minor leak being repaired 6/6/15	No	edit

Plant & Equipment Register

The Plant & Equipment Register maintains an easily searchable register of all plant and equipment including vehicles. List all of your calibration and maintenance item requirements (including testing and tagging) and receive automatic email notifications. Upload maintenance and service documents, search and filter assets and equipment by department, location, keyword and status and allocate equipment to employees (to track and monitor). Skytrust automatically allocates QR codes to individual plant to enable maintenance staff to use QR codes in the field and access plant information instantaneously.

The screenshot displays the Skytrust web application interface. At the top, there are two Skytrust logos and a user login area with 'Welcome Demo User' and a 'logout' button. Below the logos is a search bar labeled 'search' with 'Document Name' and a 'find' button. The main content area is titled 'PLANT & EQUIPMENT DETAILS' and includes a navigation menu on the left with options like Home, Dashboard, Documents, Skyplan, Quality, Safety, Environment, Inspections & Audits, Plant & Equipment, Inductions, Manage Subcontractors, HR, Projects, Clients & Suppliers, Reports, Injury Management, and Administration. The main content area shows a list of equipment with columns for QR Code, Photo, Description, Reg No., Tool No., VIN No., and Serial No. A specific equipment entry is highlighted, showing a QR code, a photo of a forklift, and detailed information such as Description: 1.0 - 3.5 Tonne 8-Series 4-Wheel Forklift, Type: Fork Lift, Make: Toyota, Model: 8FG/8FD, Date of Manufacture: Year: 2013, Purchase Date, Disposal/Sold Date, Hire Rate, Depreciation Rate, Tool No. 1236454k, Serial No. 987654423, Initial Cost: 25000, Safe Work Load Weight, and In Stock: 0.

Equipment details page including QR code

SKYTRUST Functions

HUMAN RESOURCES

Photo	Employee Name	Email	Job Title	Direct Number	Mobile Number
	David Miller	davidm@qhse.com.au	Systems Manager, Academic Director - , Cleaner, 123 Excavator Operator (OD)		0488772790

Job Titles & Training	Training Completed	Equipment	Warnings	Incidents	OFI	Hazard	Inspections	Committees	Actions
SMS Records	System Documents	Personal Documents	Inductions	Notes	Health Information	NCR			

JOB TITLES & TRAINING

Systems Manager - Skytrust Demo				
		Licence Number	Gained	Expires
Business Cert III	✓		28/10/2014	
CITB Number	✓		11/02/2013	
Confined Spaces	✓		20/04/2010	
Drivers Licence - Class Car (C)	✓		01/03/2013	Expires 01/03/2018
Rehab & Return to Work Co-ordinator	✓	RRWC2345	12/03/2013	
Sign Off 2012 IMS, Safety & Enviro, policies	✓		08/11/2013	

David Miller's Employee Profile

Skytrust's Human Resources section allows for full cloud-based HR portfolios on each employee, including digital files, job description area, personnel documents, what incidents they have had, etc.

Track your organisation's training requirements, including any mandatory updating requirements with automatic email notifications. Our training matrix allows you to link job titles with the competencies required and link the risks associated with that job title.

SKYCARD

Skytrust comes standard with unique employee cards which can be self-customised. Create your own Identification Card (Skycard) system with automatic QR codes which allow all employee information and training to be accessed instantly in the field via QR code smart devices.

The colour coded bar allow for easily distinguishing between employees and contractors.





DAVID MILLER
Role: Systems Manager
Company: Skytrust Demo
Project: Strategic Planning
Issue: 20/06/2013 **Expiry:** 20/06/2016




EMPLOYEE

SKYTRUST Functions

HUMAN RESOURCES CONTINUED

Job Title/Competencies/Training Management Screen

Real-time training calendar and training scheduler

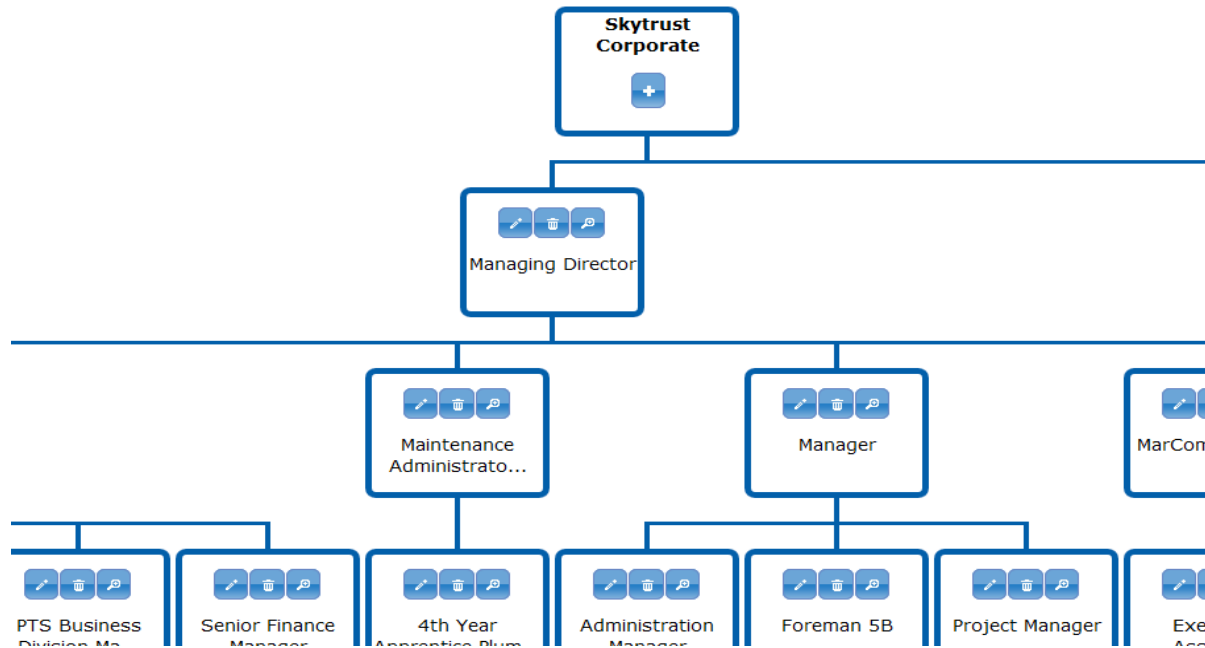
The calendar and training scheduler includes a 'drag and drop' training management system allowing you to choose which training employees or particular roles in the organisation should be undertaken.

SKYTRUST Functions

HUMAN RESOURCES CONTINUED

Organisational Chart

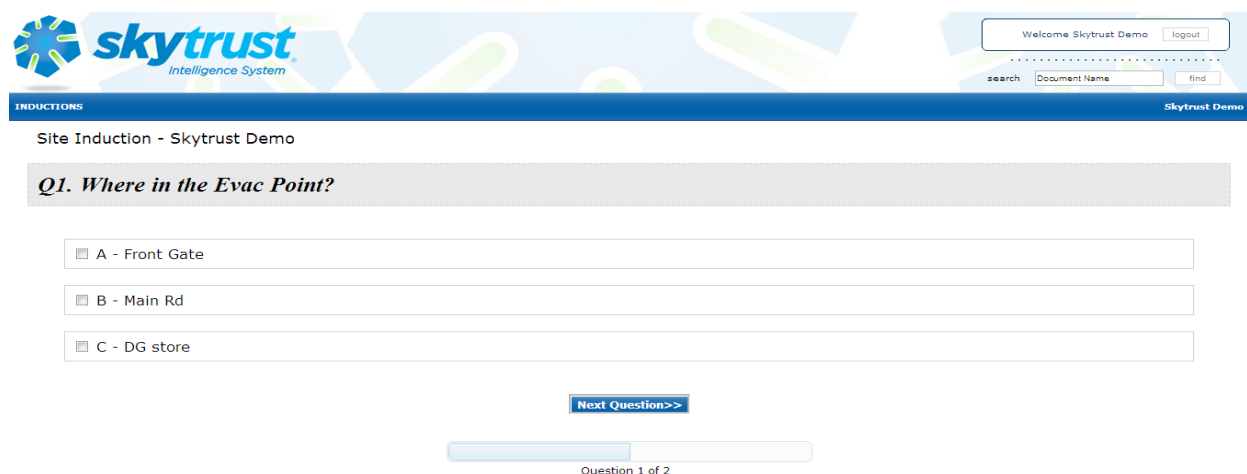
Easily create your own organisational chart with Skytrust's Organisational Chart Module. Add, delete and modify on demand, select and view by division or entire organisation, drop and drag functionality added for efficiency, add a job title/role into the organisational chart and it will automatically appear in the training system to begin competency allocations and group and restructure live within seconds.



Skytrust's Organisational Chart Module

ONLINE INDUCTION (OPTIONAL ENHANCEMENT)

An optional module Skytrust can be purchased with is Online Inductions. Create customised job inductions based on Procedures, MSDS, Residual Hazards, Training courses and other documents linked to a Job Description. Create corporate training portals and e-learning environments. Create your own questions and examinations. Send out an unlimited amount of training or inductions. Have the HR profile of your employees automatically updated with their training results



An induction given to an employee regarding the location of the evacuation point on site

SKYTRUST Functions

INJURY MANAGEMENT (OPTIONAL ENHANCEMENT)

The screenshot displays the 'Injury Management' interface. On the left is a navigation menu with items like Dashboard, Documents, Quality, Safety, Environment, Inspections & Audits, Plant & Equipment, Inductions, Manage Subcontractors, HR, Projects, Clients, Reports, Help, Injury Management, and Administration. The main content area is titled 'Injury Details' and contains a table with the following data:

Location	State	Claim No	Date Of Injury
Skytrust Demo	SA		05/06/2012

Below the table is a profile picture placeholder and a list of details:

Name	Henning Klovekorn
Injury Type	First Aid Incident
Affected Body Locations	Spine, lower

The 'RETURN TO WORK PLAN' section includes a form with the following fields:

- Type: Return To Work Plan, Graded, Proposed
- Plan Created On: 22/08/2012 11:49 am
- Plan Based on WCMC: Please Select
- Return to Work Goal: For Joann Rodgers to return to work on pre-injury duties.
- Pre-Injury Duties Location: Build retaining wall, Other
- Pre-Injury Shift: Day, Afternoon, Night
- Suitable Duties Location: Build retaining wall, Other
- Hours Of Work: [Empty field]

Injury Management - Return to Work Plan

Skytrust's optional Injury Management Module is a link between each workers' compensation claim and the incident record. It's also a link between the return to work case and the incident record to enable the return to work case to begin before the claim is determined. You have the ability to record payments made for cases (in house payments), to view history of past cases and claims for an employee, to record and view notes and actions by case (with chronological view and also by contact, i.e. see all notes related to doctor contact only, see all notes by date of contact) and track statistics such as duration (length of claim).

In conjunction with this module, user access privileges can be set restricting features accessed and reports viewed based on user or job type.

The Injury Management Module allows for the storage of documents relating to Injury Management case files (i.e. Doctor Letters, Rights and Responsibilities, faxes, case conference summary reports etc...). Return to Work Plans can be generated and then uploaded and saved (printable and email). Time and date stamp functionality is present for all entries into the system for tracking and security purposes.

Report on number of open claims with various data filtering options (e.g.. open, unfit only, reduced hours, full hours etc.). Case Status Report with various filtering options (e.g. location/supervisor/return to work coordinator). This allows for a claims review and for each claim to be printed on request.

SKYTRUST Functions

ISO MANAGEMENT SYSTEM AUDIT (OPTIONAL ENHANCEMENT)

Audit ID	Business Unit	Third Party	Process	Location/Project	Title	Scheduled Date	Completed Date	Progress	Summary	Edit	Copy
1532	Skytrust Demo	No	Quality	Finance	NCR and Action Items	Not Set	Not Started	0%	Summary	Edit	Copy
1481	Skytrust Demo	No	Integrated Management	Reaccreditation Degree 2015	Self Insurers Interim Audit	10/02/2015	Not Started	0%	Summary	Edit	Copy
1373	Skytrust Demo	No	OH&S	Reaccreditation Degree 2015	Academic Safety System Audit	02/12/2014	Partially Completed	25%	Summary	Edit	Copy

Audit list and search

Audit ID	Process	Location	Title	Scheduled Date	Completed Date
59	OH&S	Strategic Planning	Strategic Planning: Objectives - Targets - Performance Indicators	14/06/2012	08/08/2012
Section				Completed	
General Standard Criteria				Annual Review by Management and H&S Committee drives continuous improvement	

Norm	Criteria	NB/Example	Evidence / Commentary / Findings	Max Score	Act. Score	OFI	Action
Target 1.1	Annual Review occurs - Performance Indicator 2.1.1 Annual review by Management and H&S Committee drives continuous improvement	Performance Indicator 2.1.1 Annual review by Management and H&S Committee drives continuous improvement OHS Committee reviews audit feedback and system data e.g. incidents and hazards, and progress against objectives, then passes recommendations onto Management. Management review audit feedback, system performance, OHS Committee recommendations and then set the Strategic Plan for the following year.	All systems are implemented and tracking of progress occurs continuously on Skytrust. Annual review is planned to occur in December (half year review) and July (final review) every year.	10	6	+	+
Action List							
Possible Score		Achieved Score	Shortfall	%Compliance			
10		6	4	60%			

Section Comment	Annual review has not yet occurred, however, Skytrust is being used to collect data.	Possible Score	10
		Achieved Score	6
		Shortfall	4
		% Compliance	60%

Details of an audit

The ISO Management System Audit is preloaded with the following audits; AS4801 Management Systems, OFSC, AS/NZS ISO 9001:2008 & 2015, AS/NZS ISO 14001:2004 & 2015, HACCP & GMP. From the Audit screen allocate actions for NCRs and OFIs. Add multiple audit sections and modify them as required. Input the date once and receive real time status reporting. Add new audits or copy from existing templates.

All completely accessible from laptops, tablets and PDA enabled devices on the go. The ability to convert your auditing information to a PDF is available all with one click. Evidence such as photos, pdfs and documents can be uploaded to each audit. Audit scoring is available and is user defined.

SKYTRUST Functions

SKYLOG

Change management is an important aspect of Skytrust. All new innovations and modifications are tabled live to Skytrust customers on the 'Skylog' page. Here customers can see minor and major changes and improvements, with major changes being implemented after a five business day notification guarantee to assist your organisation in preparing for the new innovation.

SUGGESTION PORTAL

Skytrust is built with the input from our extensive global customer-base. Some of Skytrust's best ideas are customer suggestions which have been designed, programmed and implemented into Skytrust without further costs to customers.

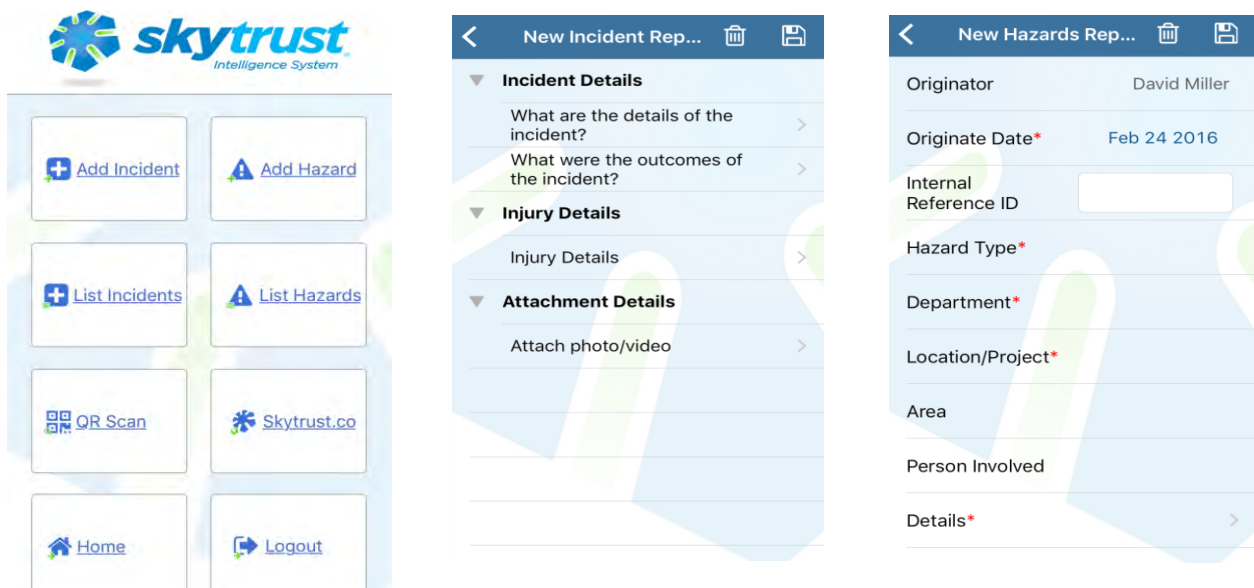
If you have a suggestion to improve functionality, please use our suggestion portal.

SKYTRUST APP

This latest innovation from the Skytrust team provides "Off-Line capability for Incident and Hazard reporting. Making it possible to easily record the basic details of an event encountered when staff are out of internet connectivity or unable to use their own data. Then when in range the notification can be triggered by easily syncing to Skytrust. The Home button also dovetails neatly into your new Home Tile page, providing a seamless transition into the full version of Skytrust, using your access privileges.

Key Features and Benefits:

- Off Line Incident and Hazard Reporting
- In built QR code reader
- Integrates into Skytrust Tile Page (single Sign-on)
- Secure and checks for access privileges
- Free download from your App Store or Google Play



Screen shot examples - Landing page, Add Incident page and Add Hazard page



Q and A

How secure is Skytrust?

Skytrust security is a primary corporate objective constantly maintained and reviewed to benefit of subscribers.

We undertake to protect the Skytrust platform:

- (i) by forcing upon the user SSL security. This is a 2048 bit RSA Key with 128 bit session encryption
- (ii) via application-controlled logins which are hashed and stored using SHA-1 cryptography
- (iii) by selecting a premier hosting provider who uses industry-leading Sourcefire's Intrusion Detection and Prevention Systems

With government agencies, Tier 1 contractors, large mining companies and defense organisations subscribing to Skytrust, our security measures are continually being tested and scrutinised. Our commitment to you is to ensure your data remains safe and free from external intrusion.

Where is my data and where is it hosted?

Our primary server is located in Melbourne within the World Class Fujitsu Data Centre. This facility has ASIO T4 certification, ISO 27001 Certification, is a fire proofed facility with armed security guards and CCTV systems. The centre has automated air sampling systems to detect air impurities, uptime guarantee of 99.98 % as well as several redundant power supply systems.

At Skytrust your data security is paramount to us, hence in addition to the above measures, we keep a further three sets of your data in private servers, one kept severed to protect from digital intrusion (hacking) and malicious threats such as viruses. We also keep the servers physically separated by over 500kms to ensure your data is protected from geographical association threats such as war, terrorism or natural disasters. Our team of programmers is specifically selected. Access to Skytrust for programming purposes is only possible from within our head office and all staff sign a confidentiality agreement. On staff leaving as well as on a frequent periodical basis, all Skytrust internal passwords are re-set and controlled by our programming supervisors.

Where is Skytrust built?

Skytrust was designed and built in Australia using Australian-based expertise. This philosophy remains and all Skytrust programming remains in-house and physically controlled through our head office in Adelaide, Australia.

What support options and services are there?

A standard Skytrust subscription includes 4 hours of Webex training. We recommend this training to occur with your key staff or Skytrust administrators. Skytrust has a free help-desk support service during standard business hours. Subscription to Skytrust includes access to our global support hub where each request is logged, tracked and allocated to a Skytrust programmer for resolution analysis. Our certified Skytrust Partners are also excellent resources to explain Skytrust features and often offer auxiliary business services such as consulting and business advice.

Further training can be organised at any time for our standard fee of \$165 per hour. Clients with significant organisational structures can utilise our implementation services by a Certified Skytrust Project Manager for an hourly rate of \$165. Implementation services are tailored to suit the needs of your business, including a staging plan, stakeholder engagement, training plan and change management implementation.

We like the idea of Skytrust, can we trial the software without obligation?

Yes. The Skytrust Sandbox platform is available for you to try the product before you buy with a 3 month no obligation trial. Here you can raise incidents, create QR codes and test various aspects of the system as you desire. Testing Skytrust and understanding its features and limitations is an important part of the selection process. Request your log-in from Skytrust or a Certified Skytrust Partners.

We are impressed with the low cost monthly subscription, but what is the catch?

We are upfront with all aspects of product delivery. Whilst we offer a standardised solution – many aspects of Skytrust are designed such that the customer can have flexibility and self-customisation within the platform, such as amending inspections, audits, performance reviews, risk tables and inductions. Whilst many competitors charge for each induction, or require long lock in periods, even exuberant data costs for leaving their systems, Skytrust has none of those pitfalls.

The minimum subscription period is only 3 months for Tier 1-3 subscribers and 6 months for Tier 4-6 subscribers, hence the risk remains very low. There is a simple one time configuration payment which pays for setup, testing and administration, and a tier-based monthly subscription fee. Customers can opt in or out certain features. Data allowances are included in the subscription and exceedances are charged out at a flat rate. Should you wish to leave Skytrust, the data remains yours and is given to you on a USB device for a service disengagement fee of \$ 1,000 AUD, which assists us in covering the costs to collate your data from the system for you.

We are open about the cost structure, open about how Skytrust works, and there are no hidden catches or fees. We are able to provide low subscription fees due to our significant market penetration and the more subscribers Skytrust can bring on board, the more services and value we can add to the platform.

Who updates the legal design and compliance aspects of Skytrust?

We do. Skytrust has Certified HR professionals, Chartered Safety Professionals, Third Party Certified Lead Auditors and other professionals who review Skytrust on a regular basis to ensure it meets the standards we align the platform to such as ISO 9001, ISO 14001, OHSAS 18001, AS1885 and ISO 31000.

We need a system that can grow with us, is Skytrust scalable?

Skytrust is all about standardisation with flexibility and scalability. You can start with one module and build on Skytrust modules over time.

I have a lot of data from plant and equipment, past incidents and Human Resources - do I need to enter this into Skytrust manually?

Skytrust comes with HR, Plant and Incident uploader templates. Copy your data across to these templates, and we will upload the data to Skytrust on-mass. This gives you a turn-key start and even populates relevant parts of your instantaneous dashboard.

What happens if I accidentally delete data?

Call our staff at Skytrust or enter the request into our Global Customer Support System for resolution. We keep several backups of your data and can usually find and reinstate data within 24-48 hours.

Can other Skytrust subscribers see my data or the data of our organisation on Skytrust?

No. In future we will bring collaborative options into Skytrust such that this is theoretically possible, but only with your expressed permission and your control over the security and access privileges.

What happens if I change my mind or something changes? What are my options?

Joining the Skytrust community means you have built a relationship with us and our Alliance partners, Partners and possibly other customers. We will seek to understand why you wish to un-subscribe as your satisfaction is of primary importance to us. Should you wish to leave the system, your system can be deactivated as requested by you.

I understand Skytrust is a global standard, but what level of self-customisation is available?

Skytrust is successful because it enables collaborative and efficient business operations on a single platform based on the international standards. Skytrust does allow for significant self-customisation, this includes the ability to create your own user groups with different security and access privileges, the ability to add new employees, modify key terminology within the system, and even allows for the creation of user-defined exit interviews, JSAs, performance appraisals, audits, inspections and risk tables at no extra cost.

What drives continual development and innovation at Skytrust?

In addition to our own research and development team, Skytrust is utilised by thousands of qualified professionals who assist us in continually improving Skytrust. We have approximately a 96% customer suggestion conversion rate of which we are very proud and the next suggestion or idea we hope will come from you.

Many software applications age quickly, will Skytrust be old technology in a few years?

Unlike other applications, Skytrust is continuously upgrading, increasing in functionality and versatility. The subscription model is therefore the most suitable for this type of technology. If you want your organisation to keep pace with technological change, Skytrust ensures you remain at the forefront of the technological race. Skytrust is a trailblazer.

Our organisation has a Change Management policy, how does Skytrust notify us of changes?

Change Management is an important factor for many organisations. At Skytrust we outline our Change Management procedure to you within our End User Licence Agreement. The Skytrust platform incorporates 'Skylog' a live and instantaneous register of changes, improvements and amendments to Skytrust. Minor amendments we make as required, major changes as defined in the EULA we implement only after a five day notification period to give your organisation time to notify and manage the change if required.

Does Skytrust work on my iPad or Tablet PC?

Yes. Skytrust is principally designed for PC desktop environments but all aspects of the system can be used on a smartphone or tablet PC with internet access. With the advent of mobile app technology, Skytrust is progressively adding smartphone and tablet PC app capability to further enhance your Skytrust experience.

What are some of the future developments I may expect to see on Skytrust in the medium to long term?

Three dimensional dash boards, Google G lass compatibility, voice activated on demand auditing, financial management, global collaboration tools and social media modules are on our development and innovation list. The sky is the limit and your ideas are welcome.

Who else uses Skytrust?

One of the many benefits of Skytrust is its significant user-base. Skytrust is utilised by government, military support organisations, food and automotive manufacturers, civil, engineer and construction contractors, international certifiers to sole traders. This extensive and influential user-base, effectively means Skytrust has thousands of designers and professionals testing, verifying and improving Skytrust for the future benefit of all subscribers. Skytrust's strength is through its international reach, continued modernization and influence.



Recent Partners Conference

REGISTER of Partners

Partner	Country	Web Address	Contact Name	Phone	Mobile	Email
Macssgroup Pty Ltd	Australia	macssgroup.com.au	Gary Mounsey	(08) 8212-2524	0400 008 150	info@macssgroup.com.au
Employer Global Sol.	Australia	egsglobal.com.au	Theresa Hines	(08) 8408 5200	0408 142 877	theressa@egsglobal.com.au
Shawsafe Solutions	Australia	shawsafe.com.au	Warren Shaw	(07) 3202 8024	0434 193 970	quality@qualityaustralia.com.au
CCF WA	Australia	civilcontractors.com	Harmony Thuresson	(08) 9414 1486	0412 888 014	hthuresson@civilcontractors.com
Phil Unicomb	Australia		Phil Unicomb		0412 456 207	pnuni@bigpond.com
iiNexus Global	Australia	iinexusglobal.com	Bobby Thai		0409 804 401	bobby@iinexusglobal.com
QMS Certified	Australia	qms.com.au	Adam McDean	1800 065 800	0423 162 882	adam@qms.com.au
ARC Safety Cons. and Man. Serv.	Singapore		Tan Keng Hwee		9658 7758	tankenghwee@arcsafety.com.sg
Kenaz P/L	Australia	kenaz.com.au	Neville Brown		0402 144 748	neville@kenaz.com.au
Outback Safety	Australia	lgsafety.com.au	Martyn Hill		0412 820 942	martyn.hill@outbacksafety.
Steve Loring	Australia		Steve Loring		0404 478 251	steveloring@hotmail.com
Verve Group	Australia	vervegroup.com.au	Sean Loader	(08) 8120 4877	0458 556 182	sean@vervegroup.com.au
Work Health and Safety Concepts	Australia		Matthew Thorne	1300 122 545	0413 771 723	matthorne@optusnet.com.au
BNH Safety Services	Australia	bnhsafetyservices.com.au	Brett & Nada Hodge		0488 102 116	info@bnhsafetyservices.com.au
Safe Services	Australia	safeservices.com.au	Richard Bowden	(08) 8337 2322	0417 113 396	Enquiries@SafeServices.com.au
Hart Safety Management P/L	Australia		Steven Hart		0438 932 115	hartsafety@tpg.com.au
Ann Tomlinson AT Consultancy Group	Australia	atconsultancygroup.com.au	Ann Tomlinson		0427 285 775	ann@atconsultancygroup.com.au
Total Safety Solutions	Australia	totalsafetysolutions.com.au	Rod Hangan		0407 798 212	rob@totalsafetysolutions.com.au
Management Innovation Window	Iraq	miwteam.com	Parwiz Chicho	+964 750 4485917	+964 750 7550104	parwiz.chicho@miwteam.com
Norman Harvey	Bahrain		Norman Harvey	+973 99449232		abumls@outlook.com
	Saudi Arabia			+966 531815054		
	UK			+44 7544652036		
	Egypt			+20 1114364768		
Ramzi Beidas			Ramzi Beidas			ramzi.beidas@ithmid.com
HHF Development Consultancy Office	Saudi Arabia		Dr. Hani Fetyani			fetyani@yahoo.com



Nada Hodge



Neville Brown



Phil Unicomb



Bobby Thai



Hani Fetyani



Steven Hart



John & Richard Bowden



Adam McDean



Ann Tomlinson



Parwiz Chicho



Theresa Hines



Mathew Throne



Martyn Hill



Rob Hangan



Norman Harvey

PRICING Schedule

Prices are valid until 30th June 2017 unless superseded. Please enquire with your nearest Certified Skytrust Partner.

Tier		1	2	3	4	5	6
Registered Personnel		1-20	21-100	101-250	251-500	501-1000	1001-5000
Deployment	Technical setup and testing	✓	✓	✓	✓	✓	✓
	Historical data configuration	✓	✓	✓	✓	✓	✓
	Deployment assistance	2 hrs	4 hrs	4 hrs	6 hrs	6 hrs	8 hrs
	Included Training	2 hrs	4 hrs	4 hrs	6 hrs	6 hrs	8 hrs
	One-time deployment cost	\$ 499	\$ 999	\$ 1999	\$ 3000	\$ 4000	\$ 10,000
Core System*	Skychart Dashboard	✓	✓	✓	✓	✓	✓
	Document Management	✓	✓	✓	✓	✓	✓
	Safety Management	✓	✓	✓	✓	✓	✓
	Quality Management	✓	✓	✓	✓	✓	✓
	Environmental Management	✓	✓	✓	✓	✓	✓
	Human Resource Management	✓	✓	✓	✓	✓	✓
	Asset Management with QRC	✓	✓	✓	✓	✓	✓
	Reporting Module	✓	✓	✓	✓	✓	✓
	Action Management	✓	✓	✓	✓	✓	✓
	Subcontractor Management	✓	✓	✓	✓	✓	✓
	SMS System (includes monthly sms allocation)	✓ (50sms)	✓ (100sms)	✓ (200sms)	✓ (500sms)	✓ (750sms)	✓ (1000sms)
	Full Hosting & Disaster Recovery	✓ (8Gb)	✓ (15Gb)	✓ (25Gb)	✓ (40Gb)	✓ (50Gb)	✓ (100Gb)
Monthly Subscription	\$ 199	\$ 399	\$ 699	\$ 999	\$ 1,500	\$ 2,500	
Enhancements	Skychart Premium Dashboard	\$25	\$50	\$75	\$100	\$150	\$300
	Injury Management Module	\$25	\$50	\$75	\$100	\$150	\$300
	ISO Audit Master Module	\$25	\$50	\$75	\$100	\$150	\$300
	On-line Induction and Training	\$25	\$50	\$75	\$100	\$150	\$300
	Project/Site Diary Module	\$25	\$50	\$75	\$100	\$150	\$300
	ITP Module	\$25	\$50	\$75	\$100	\$150	\$300
	Multi Division Platform	\$25	\$50	\$75	\$100	\$150	\$300
Additional Support Hour Rates							
	\$165/hr	\$145/hr 10 hour block	\$140/hr 20 hour block	\$135/hr 40 hour block	\$115/hr 60 hour block	\$95/hr 100 hour block	
Cost	One-time deployment	\$		Core System based on Tier		\$ /month	
	Optional Enhancements	\$ /month		Additional support hours		\$ for hrs	
	Initial upfront payment:	\$		Total monthly subscription		\$ /month	
	Exclusive of tax/levy type:			Tax/levy Percentage			
Annotations:							
Authorised Skytrust Partner:				Client acceptance of quote:			
Name:		ID:		Name:		Role:	
Role:		Date:		Company:		Date:	
Signature:				Signature:			

- Users of Skytrust must agree to and sign the Skytrust End User Licence Agreement.
- Prices shown in \$ AUD. Prices are subject to international exchange rate variations and relevant jurisdictional taxes and levies.
- All prices for Australian businesses are GST exclusive.
- Where SMS service exceeds the monthly allocation, SMS charges apply to the subscription at 9 cents (\$0.09 AUD) per SMS.
- Historical Data Configuration limited to incident/assets/HR data providing the client populates the Skytrust upload template.
- Additional support services (training/ deployment/ travel) as negotiated. *As per Skytrust Functionalities Specification

- The Pricing Schedule may be subject to annual standard CPI increases.
- Tier 1 to 3 (inclusive) require 3 month upfront subscription payment.
- Tier 4 to 6 (inclusive) require 6 month upfront subscription payment.
- Additional data storage is charged at \$37.50 per 2 gigabytes per month.
- Initial setup/deployment assistance/ training is provided over the phone.

Skytrust Features

- Feature Packed – The Skytrust Platform offers industry leading functionality from on-line incident and hazard reporting, to full quality and HR functionality.
- Common Platform – Skytrust is a single platform solution significantly reducing costs
- Secure – Skytrust remains totally secure and private to your organisation
- Networking – Skytrust enables partnerships and network building within its portal
- Scalability – Skytrust functionality grows with your organisation
- Expandability – A large suite of Skytrust modules is available to your organisation on demand
- Industry – Blind Industry benchmarking dashboards allows you to compare your performance
- Oversight – Exceptional oversight powers using the new SkyChart drillable dashboard
- Influence – Skytrust is International, with Certified Partners throughout the Globe.

14 Reasons to Choose Skytrust

1. No long lock-in periods
2. Always the latest up to date software
3. Constant free upgrades
4. Global alliance partners
5. Drillable dashboards
6. Utilised by successful companies globally
7. Try before you buy option
8. Extensive functionality
9. Built to align to the international standards
10. Exceptionally cost effective
11. Turn-key solution operational in 48 hours
12. Cloud-based
13. Full disaster recovery and backup included
14. First class customer service



skytrust[®]
Intelligence System
